



SUSTAINABLE CIVIL INFRASTRUCTURE GROUP

Capability Statement September 2025



OH&S Management Systems



Quality Management Systems



Environmental Management



WWW.JAS-ANZ.ORG/REGISTER

Joint Accreditation System of Australia and New Zealand



MOVING EARTH, BUILDING FUTURES! WE'RE NOT JUST ENGINEERS, WE'RE ARCHITECTS OF TOMORROW'S LANDSCAPE.

1800 960 341 - www.sci-group.com.au - info@sci-group.com.au

ABOUT US

At SCIG, we are more than just a civil Earthmoving company - We transform landscapes and shape the world around us. With a 'can do' attitude, everything is possible.

SCIG was founded in Melbourne, Victoria in 2022 and established due to a demand from the commercial sector requiring professional civil Infrastructure services. We have been entrenched in the Construction and development industry for 30 plus years delivering end to end Iconic and landmark Large Mixed-use Development and Construction projects.

This experience ensures your project will run on time and budget with precise accuracy with no down time.

SCIG own all equipment and employ permanent staff ensuring optimum outcomes with total control of all project deliverables

SCIG'S Vision is employing sustainable techniques, moving earth, material sourcing and disposing initiatives benefitting from cheaper, efficient, and socially responsible business practices.



SERVICE OFFERING

SCIG offer a stress-free, optimum outcome & solution driven service offering that empowers our clients and enhances their performance and deliverables in quality, safety, sustainability, accuracy, time and budget.

With a Can do everything is possible attitude to your vision and challenges.

Understanding the site-specific requirements of government and our clients, we ensure our New and near New equipment is always well maintained, project ready and legislatively compliant.

REQUEST A QUOTE

www.sci-group.com.au/request-a-quote



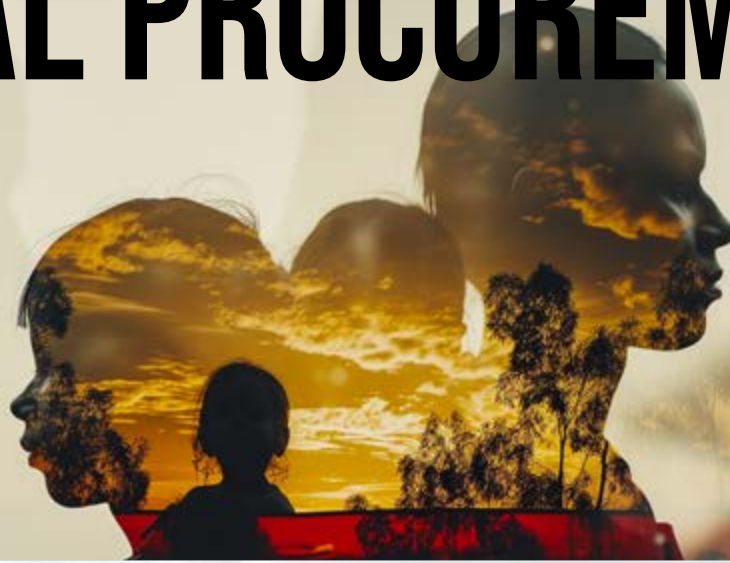
We have our own Fleet of Earth moving and Soil Disposal Equipment, Trucks and Skilled Operator drivers available.

- We Guarantee no delays or down time
- We Guarantee better efficiencies
- We Guarantee to save you time
- We Guarantee to save you Money
- We provide access to any quantity of equipment and Trucks to service our clients interest no matter how small or large the demand

WE ARE A 1 STOP SHOP, HANDLING END-TO-END DELIVERY TO OPTIMIZE YOUR TIME AND EFFICIENCY WITHOUT DOWNTIME.

SOLUTION FOCUSED - IMPLEMENTING PREVENTATIVE MEASURES SOLVING COMPLEX CHALLENGES.

SOCIAL PROCUREMENT



SCIG

SCIG considers many factors that affect us, our community and the world in which we all live. These factors affect our decisions, and we plan to achieve harmonious states in all the following:

- Sustainability
- Human Rights
- Diversity within our workplace
- Community minded

More Details

For more details visit our website www.sci-group.com.au

How we do it:

With a Shared Passion and love of sport and mentorship uniting indigenous and diverse cultural communities. We work with local and interstate **indigenous communities** to find workers to suit your needs, but we also work in other areas of **social procurement** too, specifically the homeless, refugees, asylum seekers, long term unemployed, mature aged, people with disabilities and disadvantaged people from all backgrounds.

Social Procurement

is about helping those around us find employment to live meaningful and fulfilled lives.

- Our Social Indigenous strategy complies with the Australian Government's Indigenous Procurement Policy (IPP).
- Working with Us helps you reach your Aboriginal Participation in Construction and other Social Procurement targets.
- We are engaged with and finalising our Supply Nation Registration through a Joint Venture alliance.
- This allows your business to meet regulatory compliance with the Federal Government's Indigenous Procurement Policy (IPP), and
- Indigenous Management with strong ties to Aboriginal / Torres Strait Islander's. Provide training and staffing solutions deploying skilled and dependable Indigenous workers to a diverse range of clients to support their workplace with pride and respect.

EXPERTISE



WE SPECIALISE IN A WIDE RANGE OF CIVIL CONSTRUCTION SERVICES, INCLUDING:

1 Civil & Earthworks

From initial site preparation to final grading, our team ensures precision and efficiency. Constructing durable and safe roadways and pedestrian paths. Commercial and industrial developments, schools, universities and hospitals.

2 Storm Water and Wetlands

Implementing effective drainage systems to manage water flow and prevent erosion.

3 Gas, Water, Power & NBN



4 Environmental works

EPA Registered and permitted RIW.

Cartage and disposal of spoil, landfill disposal sites, resource recovery facilities, soil remediation, asbestos removal, and general environmental services.

5 Equipment HIRE

Hire of construction plant and equipment.

SCIG has a New and Near new fleet of GPS controlled diesel/full electric earthmoving plant (excavators wheeled and tracked, rollers, dozers, graders and Trucks).

6 Concrete structures

Pits, culverts, formwork, retaining walls

7 Landscaping

Including commercial developments, municipal parks and gardens, sporting facilities, streetscapes and public infrastructure.



We own all our own equipment and Trucks with permanent full time highly skilled Operator/Drivers. What this means is your project will run on time and budget and accuracy with no down time, no contractors / sub-contractors taking on other jobs and slowing progress. SCIG are in full control giving you peace of mind on all deliverables being on time every time. We have you covered. Our team of highly skilled professionals is equipped with the latest technology and industry best practices.

We dig, We cart, We dispose material, bulk excavation to the most intricate civil projects on time every time

SOLUTION FOCUSED - IMPLEMENTING PREVENTATIVE MEASURES SOLVING COMPLEX CHALLENGES.

SAFE & EFFICIENT

Ensuring accurate live management and documentation of all equipment and Operators including our stringent Fleet maintenance and compliance.



QUALITY

With Safety Compliance and Staff development and Education at the fore front of all we do, our team of expert operator/drivers are regularly upskilled and multi ticketed with RIW/EPA credentials.

We move quickly on time, every time, ensuring the most cost-effective solutions are presented, without wavering on efficiency and quality.

IMPORT OF QUALITY MATERIAL

- TOPSOIL
- COMPACTIBLE CLAY
- MUDSTONE
- CAPPING
- BALLAST/QUARRY PRODUCTS

REQUEST A QUOTE

www.sci-group.com.au/request-a-quote

At SCIG, we hold numerous industry memberships and are independently ISO certified.

Our industry leading automated IMS (Integrated Management System) reflects our commitment to technology, Health, Safety, quality, and environment.

We meet the following Standards:

- ISO 45001:2018 – OH&S Management Systems
- ISO 9001:2015 – Quality Management Systems
- ISO 14001:2015 – Environmental Management
- Members of the Master Builders Association
- Audited and Certified (HVNL) Heavy Vehicle National Law Management Plan, ensuring compliance for all heavy vehicle activities with the requirements of: The Chain of Responsibility (CoR) and the Heavy Vehicle National Law (HVNL)
- Civil Contractors Federation Victoria.
- EPA Registered and permitted RIW

Ensuring accurate live management and documentation of all equipment and Operators including our stringent Fleet maintenance and compliance.



OH&S Management Systems



Quality Management Systems



Environmental Management



Joint Accreditation System of Australia and New Zealand



SUSTAINABLE

OUR **EV** TRUCK AND EARTHMOVING EQUIPMENT LINE UP IS AN AUSTRALIAN FIRST



Our Vision is employing sustainable techniques, moving earth, material sourcing and disposing initiatives benefitting from cheaper, efficient, and socially responsible business practices.

We offer a diverse range of Purpose- built Earthmoving Machines, Equipment and Trucks (including Specialised industry specific trucks) available in Diesel/EV options.

We are committed to leading the charge towards a more sustainable and eco-friendly future. Our latest innovation, the EV Trucks and Plants, exemplifies our dedication to ethical practices, community involvement, and environmental sustainability. These advanced electric vehicles and Equipment are not just a step forward in technology but a leap towards a greener planet.

Our EV Trucks and Plants are at the forefront of the electric revolution in heavy-duty civil equipment designed to deliver exceptional performance while significantly reducing carbon emissions.

Our Commitment to Sustainable Products

Our commitment to sustainable products ensures that we not only meet but exceed industry standards for sustainability. Yet our EV fleet still allows you peace of mind that our equipment will perform consistently under the most demanding conditions whilst delivering significant savings in fuel and maintenance costs.

REQUEST A QUOTE
www.sci-group.com.au/request-a-quote



PROJECTS

LANDMARK DEVELOPMENTS BY SCIG - BUILDING THE FUTURE



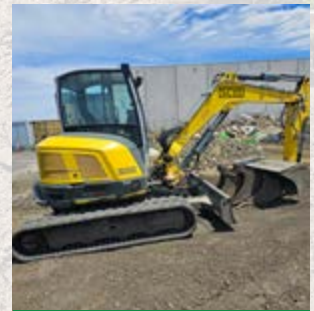
MAY CONSTRUCTIONS

When Fitzroy Primary School needed to create the internal foundation for a new subfloor within their heritage-listed building, they turned to us. We were entrusted with the delicate task of installing numerous bored piers within a confined space, ensuring that not a single piece of the existing wall structure was compromised. Our team handled the project with the utmost care and precision, exemplifying our commitment to safety and integrity. By successfully navigating this challenging environment, we demonstrated our expertise and reliability, reinforcing our position as trusted partners in the construction industry. At every step, we prioritised the community's needs, delivering high-quality, personalised service that stands tall in both technical excellence and customer satisfaction.

Together with our good friends and one of Australia's leading Civil contractors Symon Brothers, we completed the civil works at a new Industrial estate in O'hearns Road.

The works included:

- Trenching for and the installation of electrical conduit
- Foundation and Slab construction for high voltage substations
- Trenching works for all services
- Wetlands ponds dig out and profiling
- The breakdown and removal of all excess rock on site



O'HEARNS RD
INDUSTRIAL ESTATE



MASON QUARTER ESTATE

Utilising our wide range of Excavators, we have proudly delivered comprehensive civil works across various projects. Our expertise extends to Kerb and channel developments, trenching activities, stormwater drainage, and pit constructions. Not to mention, we excel in foundational and slab works, footpath creation, and road boxing and profiling. Our efficient and reliable services ensure your construction needs are met with precision and professionalism



REQUEST A QUOTE

www.sci-group.com.au/request-a-quote

JOIN THE RANKS OF OUR SATISFIED CLIENTS AND
DISCOVER THE SCIG DIFFERENCE.

REMEMBER, NO PROJECT IS TOO BIG OR TOO
SMALL FOR OUR DEDICATED TEAM, AND WE'RE
ALWAYS READY TO RESPOND TO YOUR NEEDS
ANYTIME, ANYWHERE.

JOIN US IN MOVING THE EARTH RESPONSIBLY.

REQUEST A QUOTE

www.sci-group.com.au/request-a-quote

OUR SERVICES INCLUDE CIVIL, INFRASTRUCTURE, DRAINAGE, LANDSCAPING,
ELECTRICAL, ENVIRONMENTAL AND WATER SERVICES.
THESE UNITS COMBINE TO OFFER OUR CLIENTS AN INTEGRATED SERVICE, MITI-
GATING RISKS.

Acknowledgement of Country

SCIG acknowledge the Traditional Custodians of the land where we live, learn and work, and pay respects to their Elders past and present and extend that respect to all Aboriginal and Torres Strait Islander peoples who we recognise as Australia's First Peoples.



Trucks

- Tandem tippers
- Truck & trailers
- Articulated dump trucks
- Heavy haulage
- Waste, NDD and Water trucks
- Street sweepers



Excavators

- Hydraulic tracked excavators ranging between 1.7 to 90 tonne
- Wheeled excavators
- Graders, Dozers, Scrapers
- Bobcats & posi tracks
- Backhoe tracked/ wheeled loaders
- Street sweepers
- Pad foot/ Smooth drum rollers
- Loaders

1800 960 341
info@sci-group.com.au
www.sci-group.com.au
PO Box 454, Ivanhoe 3079

SCIG - wet/dry hire – excavation, earthmoving, cartage and disposal of spoil, cartage of rock, concrete & asphalt, landfill disposal sites, resource recovery facilities, soil remediation, asbestos removal, and general environmental services to residential, industrial, municipal and commercial customers.